

# iRobot®

**Corners.  
Edges.  
And the details  
in between.**



## s9+

### Roomba®

Robot Vacuum  
+ Automatic Dirt Disposal



#### **Hugs edges, gets into corners**

PerfectEdge® Technology with advanced sensors, and a specially designed Corner Brush deliver a detailed clean



#### **Powerful deep cleaning**

Superior suction power combines with PerfectEdge® Technology for our deepest clean yet\*



#### **Cleans up after itself**

Takes care of the cleaning from start to finish – emptying on its own, so you don't have to think about vacuuming for weeks at a time

\*Compared to Roomba® 980, e5 and i7 robots

With 25 years of robotic expertise and continuous innovation, iRobot® has optimized our Roomba® robot vacuum to help thoroughly clean floors in homes around the world.



## Roomba® s9+ features:



### PerfectEdge™ Technology

PerfectEdge™ Technology finds dirt where it hides using Maximized-Edge Design and a specially angled corner brush to reach deep into corners. Advanced sensors constantly scan ahead of the robot, helping it to get close to walls and deep into corners



### Our Deepest Clean Yet\*

The 3-Stage Cleaning System uses Dual Multi-Surface Rubber Brushes and 40x suction\*\* to pull in embedded dirt, debris, and pet hair from wherever it hides



### Cleans up after you, and after itself

Automatically empties the bin into a disposable bag that holds 30 bins of dirt, dust, and hair, so you don't have to think about vacuuming for weeks at a time



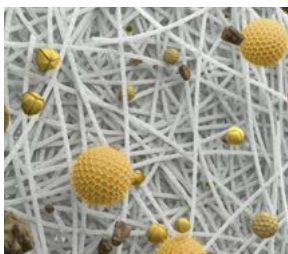
### Drives dirt from carpets

Automatically increases suction to clean deep into carpets, pulling in embedded dirt and debris



### Knows where it is, wherever it is

Using advanced vSLAM® navigation technology, the robot gathers over 230,400 data points each second that the 1.3 GHz quad-core processor uses to create an accurate map of your home



### Anti-Allergen System

The Roomba s9+ Anti-Allergen System. 99% of pollen and mold allergens are trapped and locked in, from the robot to the Clean Base™ – so that they don't escape back into the air

## Specifications

### PRODUCT

SKU	s955840
Charge Time	120 minutes
Filter Type	High-Efficiency
Battery Run Time	120 minutes in Quiet Clean
Battery Type	Lithium Ion
Bin Volume	550ml
Bin Type	Washable
Threshold Clearance	2 cm

### BOX CONTENTS

Roomba® s9 Robot Vacuum
Clean Base™ Charging Station + Automatic Dirt Disposal
Line Cord
2 Dirt Disposal Bags
1 Extra Filter
1 Extra Corner Brush

### SHIPPING

Retail Box UPC	885155018205
Master Case UPC	10885155018202
Retail Box EAN	5060359289292
Master Case EAN	5060359289308
Quantity per MC	1
Retail box Dimensions (cm)	49.86 cm x 41.96 cm x 40 cm
Master Carton Dimensions (cm)	52.07 cm x 43.18 cm x 40.96 cm
Retail Box Weight (kg)	12.02 kg
Master Carton Weight (kg)	12.7 kg
Pallet Count	12

\*Compared to Roomba® 980, e5 and i7 robots.

\*\*Compared to Roomba® 600 Series AeroVac™ System